



# The Peninsula Pelican

*The official letter of the Peninsula Beach Preservation Group*

*"Serving the Peninsula community since 1966"*

## President's Message – March 2009

We're getting ready for Summer and we're excited about the lineup of seven (7) concerts this summer. Our first concert will be "RamFunkshus". They do a funky bluesy rock and roll that will kick off our series (June 7) with gusto. This will be their second year to perform for us. And don't forget the Long Beach Fire Department Local 372 who will be there to cook hot dogs for us! Bring your drink a couple bucks and an appetite.

The next band (June 21) will be Cloud 9. They are new to us, but not new to Long Beach. They can be heard frequently at Belmont Station and other venues. They do a very smooth rock and roll (June 21).

July 5 is the Big Box of Men. This will be their third year with us and have been a crowd favorite playing mostly classic rock, but they do some big band things as well. That gets us about half way through the series. I'll describe the rest of the bands in the next newsletter. You won't want to miss these concerts. Bring you lawn chairs, dinner and drinks and enjoy the music.

On another note, we had a community meeting on April 22 to discuss a number of issues of the peninsula. Please look for that review elsewhere in the newsletter.

On May 6 at ABYC and requested by the PBPG, the city of Long Beach outlined their vision for the Leeway Sailing Club (the blue building between 54<sup>th</sup> and 55<sup>th</sup> on the bay side entrance to the peninsula). The building was built in the 1920s and used as a departure center for the gambling boats that used to operate offshore in Long Beach. It was moved to its present location in the 40's and, not surprisingly, it is in need of replacement. The Sailing Center (Operated by the Parks and Recreation Department) served over 18,000 people last year, either learning to sail, taking classes, or some

type of meeting. It's a busy place. You can learn more about what they do at the [longbeach.gov](http://longbeach.gov) website, and then simply type in on the search box "leeway sailing center". At that site there will be some space to enter your comments.

As you might be aware, there is a large development being proposed close to but not in our direct neighborhood area. And that is the Second+PCH redevelopment of the existing hotel at 2<sup>nd</sup> St. and PCH. PBPG Board has not taken a position on this development, because it is not directly on the Peninsula. However, we will make some suggestions if you desire it. If so please email me direct.

Your Board is also busy preparing for the Memorial Day and 4<sup>th</sup> July holidays, which we all know can become somewhat problematic with all the crowds. We have requested the City provide port-a-potties, one of our previous issues on these holidays, and have also requested increased law enforcement.

Our 2009 membership drive is continuing. At \$20 per year, membership is an incredible value. We work hard, but we need your support to do the many things that help make this neighborhood extra special. If you have not yet renewed your membership there is a form at the end of this newsletter.

Feel free to write or email to the address below with any questions, comments, concerns or compliment and visit our website, [www.lbpeninsula.org](http://www.lbpeninsula.org), where you can also keep up on all Peninsula activities!

Rick Turrentine, President  
[pbpgcontact@aol.com](mailto:pbpgcontact@aol.com)  
 PO BOX 3535  
 Long Beach CA, 90803-0535

## **Upcoming Events:**

**LB Fire Dept Wiener  
 Roast & Concert –  
 The RamFunkshus  
 June 07  
 4:30PM BBQ  
 5:30/7:30 PM Band**

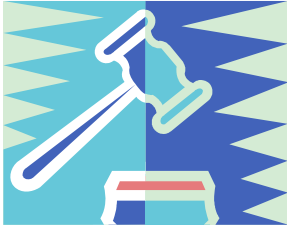
**21 June:  
 Concert @ 5:30PM  
 The Cloud**

**05 July  
 Concert @ 5:30PM  
 Big Box of Men**

## **PBPG BOARD OF DIRECTORS (2009)**

**President**  
 Rick Turrentine  
[pbpgcontact@aol.com](mailto:pbpgcontact@aol.com)  
**Vice President**  
 Phil Osterlind  
**Treasurer**  
 Jeanne Muench  
**Secretary/Historian**  
 Randy Peck  
**Directors**  
 Stevie Anderson  
 Rob Bellevue  
 Rick Brizendine  
 Lynne Driscoll  
 Peter Hogenson  
 Sharon Kemmer  
 Linda McCullough  
 Christie Peck

**PBPG**  
 PO Box 3535  
 Long Beach CA 90803  
[pbpgcontact@aol.com](mailto:pbpgcontact@aol.com)



**Would the Meeting Come to Order?**  
**A review of the April 22, 2009 General Meeting**

Approximately ninety residents attended the April 22<sup>nd</sup> meeting of the Peninsula Beach Preservation group held at the Alamitos Bay Yacht Club. Snacks and beverages were provided and folks enjoyed greeting their neighbors.

**Councilman 3<sup>rd</sup> District Gary DeLong:**

Councilman Gary DeLong kicked the meeting off by highlighting the City’s financial situation. He believes that budget cuts are likely to affect city employees at some point through cutting of positions and/or reductions in salaries or benefits. The latter would require negotiations and consent of the labor organizations involved.

**Restroom at 72<sup>nd</sup> Place**

Also discussed at this meeting is the remodel of the restroom at 72<sup>nd</sup> place. Look for the building to retain its current roof and architectural look, but with a reconfiguration of the facilities to house several single stalls with external doors rather than the current large interior space. The new configuration discourages use of the restrooms other than their intended purpose.

**Parking**

There is now an option to purchase a permit for the parking lot at 72<sup>nd</sup> place for overnight parking, similar to what Belmont shore residents have on other Ocean Blvd. Parking lots. The cost is \$40 per month. This is a pilot program to see if it works and to monitor any disruption it may cause to the neighbors. Permits can be purchased at [www.thepermitstor.com](http://www.thepermitstor.com) and enter Long Beach as your parking destination, or call 805-624-6672.

**AB213**

This piece of legislation, authored at our request by Bonnie Lowenthal is intended to allow the city to permit parking on our narrow streets going either way. Technically, our streets are two way, and cars parking with their driver side wheels to the curb have been cited. This legislation is currently being considered in Sacramento.

**Undergrounding of Utilities:**

Your Peninsula Beach Preservation Group, with the assistance of many many residents, aquired the 2/3 affirmative signatures necessary to take us to the next step. Due to the State and City financial situations, we are pausing a bit before pressing the city to expend the funds to do the necessary assessment study and prepare for a special election. When we do proceed with this step, residents will have an exact cost and an opportunity to vote. The vote will be handled by the city through mail out ballots.

**CERT Presentation**

Ed Shackeroff gave a presentation on Emergency Response in case of an earthquake. In the event of a big quake, we need to be ready to be on our own for approximately a week. Contingency plans must be made for folks that commute outside the area and residents should have food, water and medical supplies until help can get to our neighborhood.

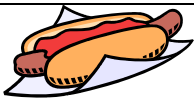


**The Median Strip**

Linda McCullough, our Peninsula Maintenance and Improvement representative, reports that the city has made some good progress in the health of the median strip. So far the city public works have replaced 4 trees, 2 kings and 2 queens. They are ordering 1 more of each which will complete that aspect of the project. The City has also created separation between the ground cover and the plants. Regarding plants they have 3 flax ordered and will plant them when they get them. If more plants are wanted / needed Linda will coordinate with the city and discuss at that time. There was a fungicide application made on 22 April with fertilization to occur the 2nd week of May. The city is monitoring the health of the vegetation from now on and will make additional applications of pesticide and fertilizer as necessary.

**Holes on the Beach...**Just a friendly reminder. It’s fun for kids to dig in the sand, but when leaving the beach, those holes can be trip hazards after dark. We should remember to fill in those holes or other trip hazards we create before leaving the beach.

**For latest info on SECURITY and CERT please visit our website at [www.lbpeninsula.org](http://www.lbpeninsula.org)**



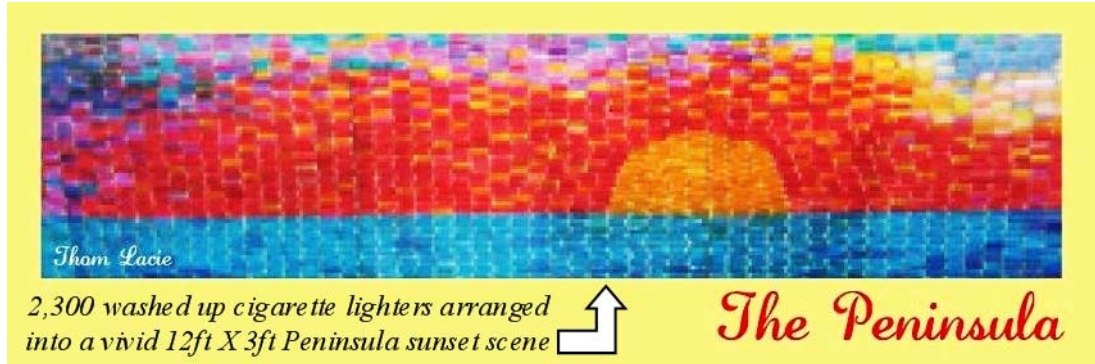
**June 7<sup>th</sup> is a Special Concert and BBQ** with the

LB Fire Department Local 372. The firemen will be cooking Hot Dogs and Bratwurst starting at **4:30** and the concert starting at **5:30**. Bring friends, family and neighbors for a wonderful evening of good food and great music. Stevie Anderson

June 07	Fire Department BBQ and RamFunkshus
June 21	Cloud 9
July 05	Big Box of Men
July 19	The Emperors
August 02	9 Caret Gold
August 16	Flight 6875
August 30	Elm Street Band

**PENINSULA T-SHIRTS & SWEATSHIRTS ARE HERE**

Our new Peninsula T-shirts and sweatshirts made their debut in our General Meeting held at ABYC on April 22<sup>nd</sup>. We still have supplies left and will be selling them at the first band concert on June 06. It has been a great accomplishment by our T-Shirt coordinator, Sharon Kemmer, to do all the steps necessary to produce these good looking shirts. And as with last year we have a special treat this year as the art work was designed by one of our local resident artists, Mr. Thom Lacie. Thom, who works in Runners High of Belmont Shore, specializes in unique kinds of art. Thom is a runner and dedicated to the cleanliness of the beach. So when he is running he picks up little artifacts to use for art creations. One of his achievements is his washed up used cigarette lighters collage. This 3ft. X 12ft. collage was displayed in our April General Meeting at ABYC. Tom gathered up buckets of cigarette lighters which have washed up on our shore. He then segregated the lighters into buckets according to their color. From there he took 2,300 of the lighters and made a beautiful peninsula sunset scene by arranging the lighters in their proper spots according to their color. A photo of this collage was then printed in color as the theme on our T Shirts and Sweat Shirts. Thom is interested in other beach environmental art and if you would like to talk with him please contact him at 562-301-4597.



2,300 washed up cigarette lighters arranged into a vivid 12ft X 3ft Peninsula sunset scene

*The Peninsula*

**T-Shirt and Sweatshirts**

We have kept the prices this year the same as last. So it is a good deal. All the proceeds will benefit the PBPG General Fund, which helps us to perform the services for you. T-Shirts and Sweatshirts will be sold at the Band Concerts, as long as they are available, or by contacting Sharon Kemmer at 434-0078.

Prices will be:

- Short sleeve tee \$17.00
- 2x tees \$20.00
- long sleeve tees \$20.00
- 2x long sleeve tees \$25.00
- sweatshirts \$25.00
- 2x Sweats \$25.00
- youth t-shirts \$13.00

Your PBPG Board has been busy to help with preparations for the public **challenges of the Peninsula Summer Holiday Season; Memorial Day and July 4<sup>th</sup>**; specifically:

The Peninsula Improvement Committee have requested that Public Works have at least 2 trash barrels at every street end on the Bay Side of the Peninsula by Memorial Day. In addition they have

requested Porto Potties strategically placed on the Peninsula for the 4th of July

They are also going to ask for a better police presence on both sides of the Peninsula this year.

**BECOME A MEMBER OF PBPG NOW!**

If you have not already renewed your membership in PBPG we are hopeful that you will renew now. PBPG is your neighborhood voice to the City of Long Beach. The more Peninsula residents that we have as members, the stronger that voice becomes. Your PBPG Board of Directors works closely with the City to ensure that our beaches, streets, median and sidewalks are properly maintained. Your Directors also have on-going communications with the Long Beach Police Department to make them aware of the safety and security issues that are of concern to all our residents. By doing this we make the Peninsula one of the safest neighborhoods in Long Beach. Your membership dues help provide for our newsletter, donation to maintain the Peninsula's Christmas Trees-in-the-Bay, hosting of our community website, training of our Community Emergency Response Team (CERTS), sponsoring Santa Claus at 62<sup>nd</sup> Place, and helping to provide for our popular Summer Concerts.

Please join with your neighbors and become a member today.

Lynne Driscoll, Membership Chair

-----  
If you wish to join, simply complete and tear off and return this form with dues of \$20 per member. Send to PBPG; Attn: Membership; P.O. Box 3535, Long Beach, Ca 90803 or take it to the 62<sup>nd</sup> Place PBPG drop box in the Laundromat.

Name: \_\_\_\_\_ Name: \_\_\_\_\_

Email: \_\_\_\_\_ Address: \_\_\_\_\_

Phone: \_\_\_\_\_

---

# **The Peninsula Pelican Newsletter**

*The official newsletter of the Peninsula Beach Preservation Group*

*“Serving the Peninsula community since 1966*